

Model-204-N Variable Temperature Optical Closed Cycle 6.5 K Refrigerator System



Model-204 Variable Temperature Optical Closed Cycle Refrigerator System

Cryo Industries Part No.:C02-002-004

Cryo Industries Dwg No.: REF-2302-204N

System Features:

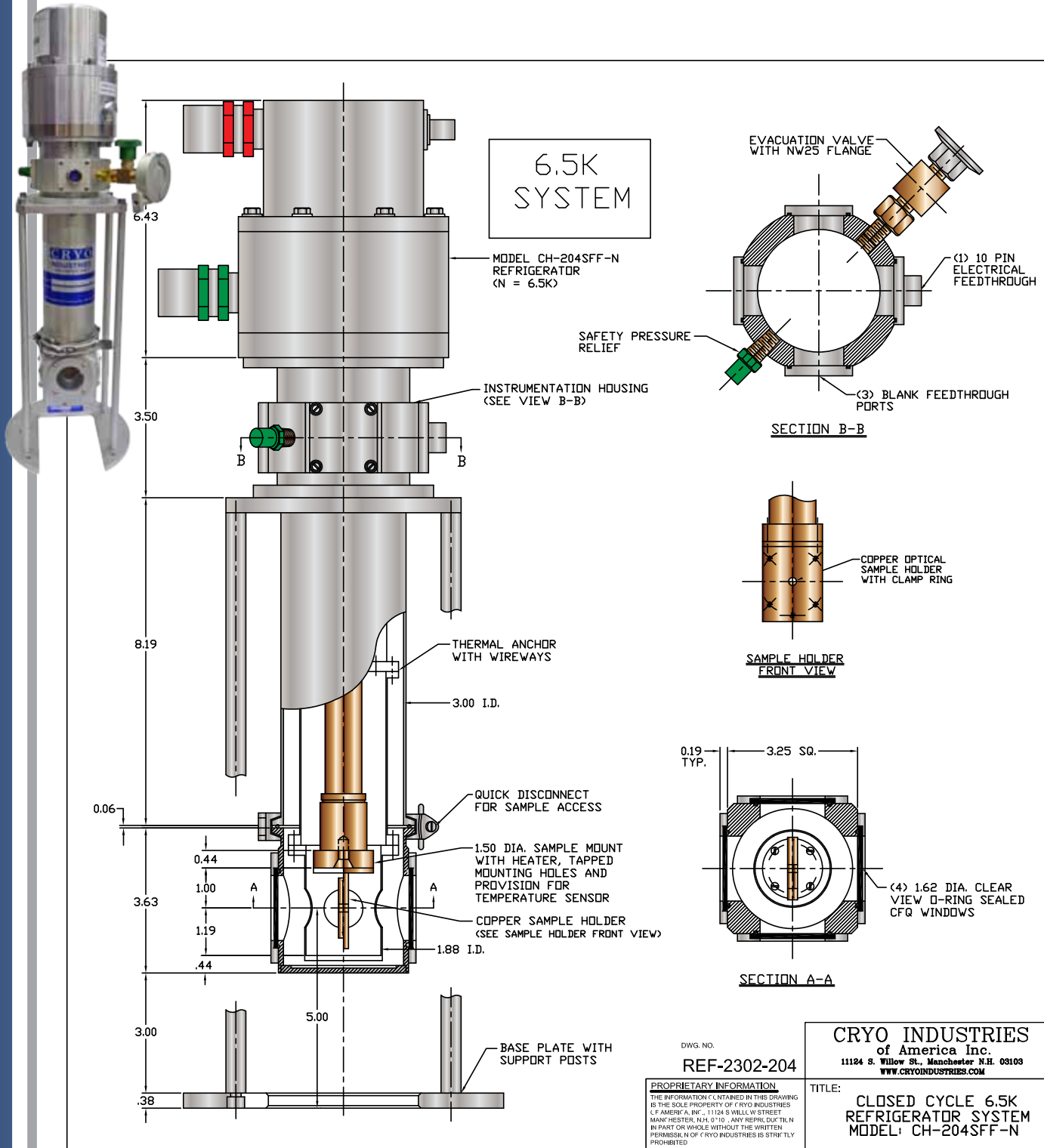
- <6.5 K to 325 K operating temperature range
- Sumitomo model: CH-204-N coldhead
- Coldhead cooling power:
 - 2nd Stage: 2.5W @ 10 K (50Hz)
 - 2nd Stage: 3.0W @ 10 K (60Hz)
- Water cooled compressor Model: HC4E-1 (200V, 50Hz- 208/230V, 60Hz)
- 10 feet interconnecting hoses and control cable
- (4) 1.62" diameter optical quartz windows
- Demountable optical first-stage radiation shield
- Demountable optical outer vacuum shroud
- 1.50 inch diameter copper sample mount
- 50 ohm high power heater installed on coldhead
- (1) 10-pin electrical feedthroughs with mate
- (3) spare blank feedthroughs
- Reliable Bellows style evacuation valve
- Vacuum shroud safety pressure relief
- Copper optical sample holder
- Silicon diode temperature sensor installed on refrigerator cold finger
- Matching silicon diode temperature sensor installed on sample holder
- Startup toolkit with operational manuals
- One year warranty

CRYO Industries of America, Inc. • 11124 S. Willow St. • Manchester, NH 03103

Tel: (603) 621-9957 • Fax: (603) 621-9960 • E-mail: cryo@cryoindustries.com

CRYO

Model-204-N Variable Temperature Optical Closed Cycle 6.5 K Refrigerator System Drawing



CRYO Industries of America, Inc. • 11124 S. Willow St. • Manchester, NH 03103
Tel: (603) 621-9957 • Fax: (603) 621-9960 • E-mail: cryo@cryoindustries.com